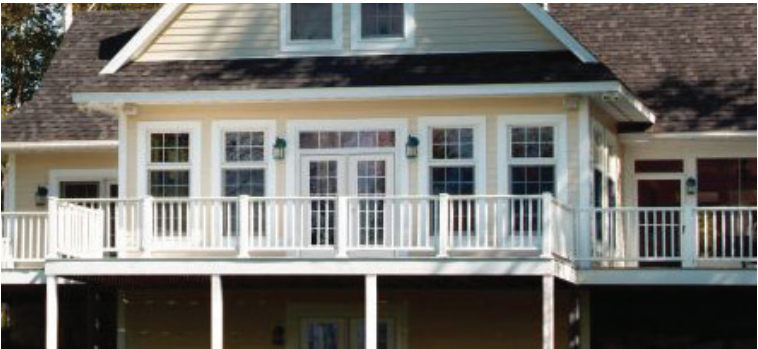
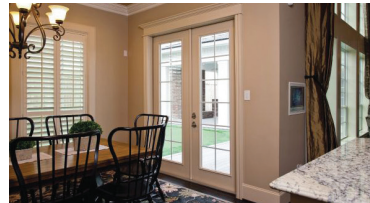




Deluxe Patio Door Systems



Style Options

S2000



Low-E

S2000-LE 4-9/16" Jamb
S2000-LE 6-9/16" Jamb

S1204



Low-E | Grids Between Glass
Flat or Contour White Grille

S1204-GBG-LE 4-9/16" Jamb
S1204-GBG-LE 6-9/16" Jamb

S1205



Low-E | Simulated Divided Lites

S1205-LE 4-9/16" Jamb
S1205-LE 6-9/16" Jamb

S2600



Low-E

Raise/Tilt Internal Blinds

S2600-LE 4-9/16" Jamb
S2600-LE 6-9/16" Jamb

S2009



Low-E | Grids Between Glass

S2009-GBG-LE 4-9/16" Jamb
S2009-GBG-LE 6-9/16" Jamb

S2050



Low-E | Simulated Divided Lites

S2050SDL-LE 4-9/16" Jamb
S2050SDL-LE 6-9/16" Jamb

All Doors are Enliten Flush-Glazed

Note: Center Hinged shown | Jamb Hinged also available

Available Sizes

Unit Width	Actual Unit Size	Rough Opening	Brick Opening
5'0" (2'6")	63" x 81 5/8"	63 3/4" x 82"	65 1/2" x 82 7/8"
5'4" (2'8")	67" x 81 5/8"	67 3/4" x 82"	69 1/2" x 82 7/8"
5'8" (2'10")	71" x 81 5/8"	71 3/4" x 82"	73 1/2" x 82 7/8"
6'0" (3'0")	75" x 81 5/8"	75 3/4" x 82"	77 1/2" x 82 7/8"

Available Hardware Finish Options:

Sill with Dark Cap: Mill, Satin Nickel, or Bronze
Ball Bearing Hinge Color: Brushed Nickel or Oil Rubbed Bronze
Schlage Seville Lever and Deadbolt: Satin Nickel or Aged Bronze

Included Features



16 Gauge
Aluminum Extrusions
for Long Lasting Durability

LIFETIME
LIMITED
WARRANTY



Lifetime Warranty on
Rot-Proof Primed
Composite Frame

Rigid Folding
Aluminum Nail Fin

Tru-Loc Anchors for a Secure
and Seamless Installation

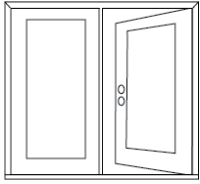
Heavy-Duty Extruded Screen
with Fiberglass Mesh



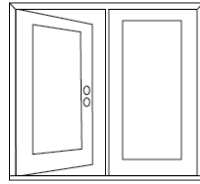
Seville Lever
Satin Nickel or Aged Bronze



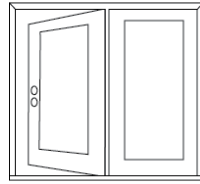
Door Handing Options (viewed from outside)



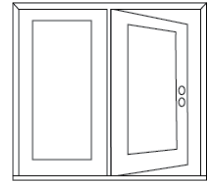
Jamb Hinged
Right Hand Inswing



Jamb Hinged
Left Hand Inswing



Center Hinged
Right Hand Inswing



Center Hinged
Left Hand Inswing

Clad Color Options



White



Black



Bronze



Almond



Sandstone

Paint Color Options



112 Alpine



100 Snow



102 Pearl



104 Champagne



106 Granite



108 Gray



110 Onyx



120 Chestnut



121 Brown



122 Sand



123 Tuscan Clay



124 Beige



125 Suede
Matches FrontLine Sandstone



126 Cream



128 Maple



130 Indigo



132 Wedgewood



133 Purple



134 Blue



136 Light Blue



138 Teal



142 Cypress



144 Forest Green



146 Green



140 Candy Apple



148 Ruby Red



152 Cabernet



154 Maroon



156 Orange



158 Yellow



Frontline White



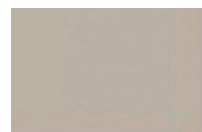
Frontline Black



Frontline Bronze



Frontline Almond



Frontline Sandstone



Note: Finish colors may vary from actual application due to fluctuations in finishing or printing. We highly recommend you reference a Palmer-Donavin Paint Palette to make your color selection.

EnLiten™ Flush-Glazed Design

Create a clean look with maximum views.



Flush-Glazed Glass



Lip-Lite Frame

See the Difference

EnLiten flush-glazed designs provide a simple profile with no added embellishments around the glass.

Flush-Glazed Glass



Lip-Lite Frame



Durable by design.

Double- or triple-pane glass is built directly into the door with a high-performance dual adhesive weather seal.

This reduces the potential for air and water infiltration, among other benefits.



Controllable privacy.

Smooth-Star® doors with internal blinds featuring EnLiten flush-glazed designs deliver simplicity and allow for optimal daylight and outdoor views, or complete privacy. See Style S2600.



Peace of mind.

EnLiten™ flush-glazed designs are backed by the industry's most comprehensive lifetime limited warranty, plus warranty riders for peace of mind.

Warranty Riders

Construction & Installation

Provides protection in case of accidental glass breakage during residential and multi-family construction or installation. Therma-Tru will replace the flush-glazed fiberglass door or sidelite.

Homeowners

Provides protection in case of glass-related failures due to manufacturer defect. Therma-Tru will furnish \$300 toward installation and replace the flush-glazed fiberglass door or sidelite.



We Deliver More™